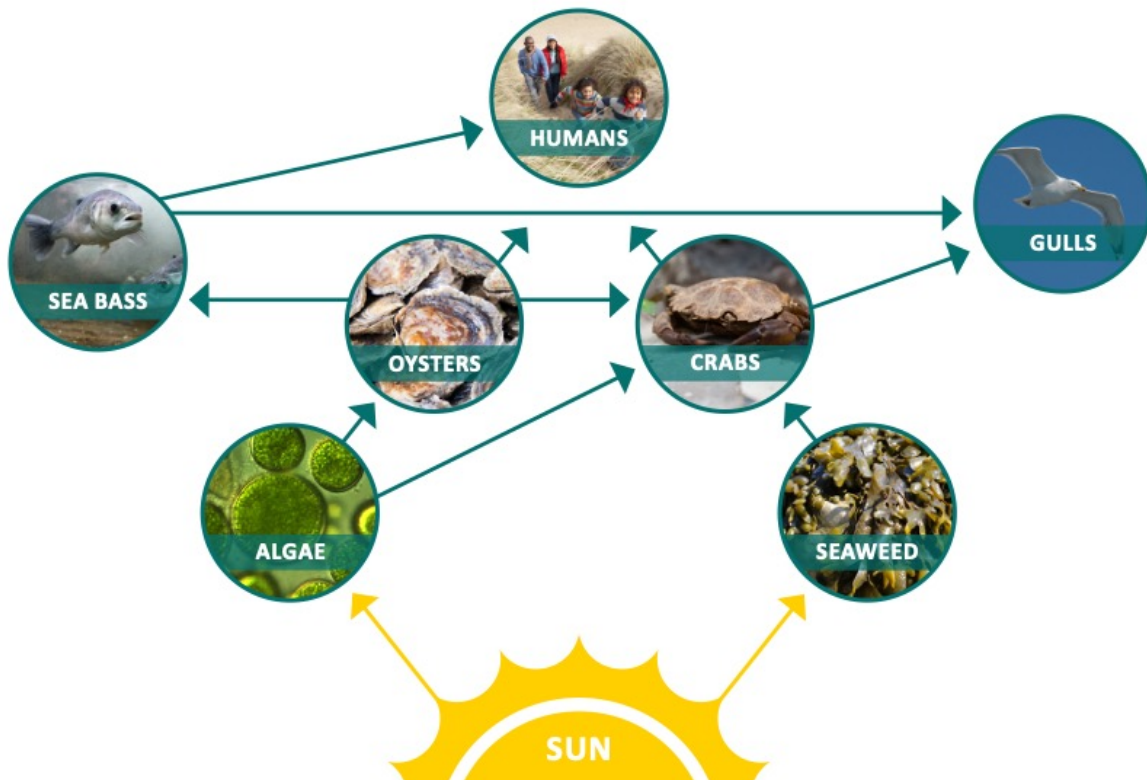


Food web activity



1. Select seven students to come up and help demonstrate.
2. Give each student one picture to hang around their neck.
3. Give out nine pieces of string to the rest of the students.
4. Discuss, with the students, the relationships between the elements in the food web.
5. Get the students with the string to join up the correct elements to one another, with the help of the rest of the class.
6. Ask one person in the web to sit down, then discuss how this would have a knock-on effect on the other elements of the system.
7. Remove oysters and discuss as a class what would happen.

Oyster food web









CRABS



SEA BASS











PRODUCER





CONSUMER



CONSUMER



CONSUMER





PRIMARY CONSUMER



SECONDARY CONSUMER



TERTIARY CONSUMER





PREDATOR



PREY

